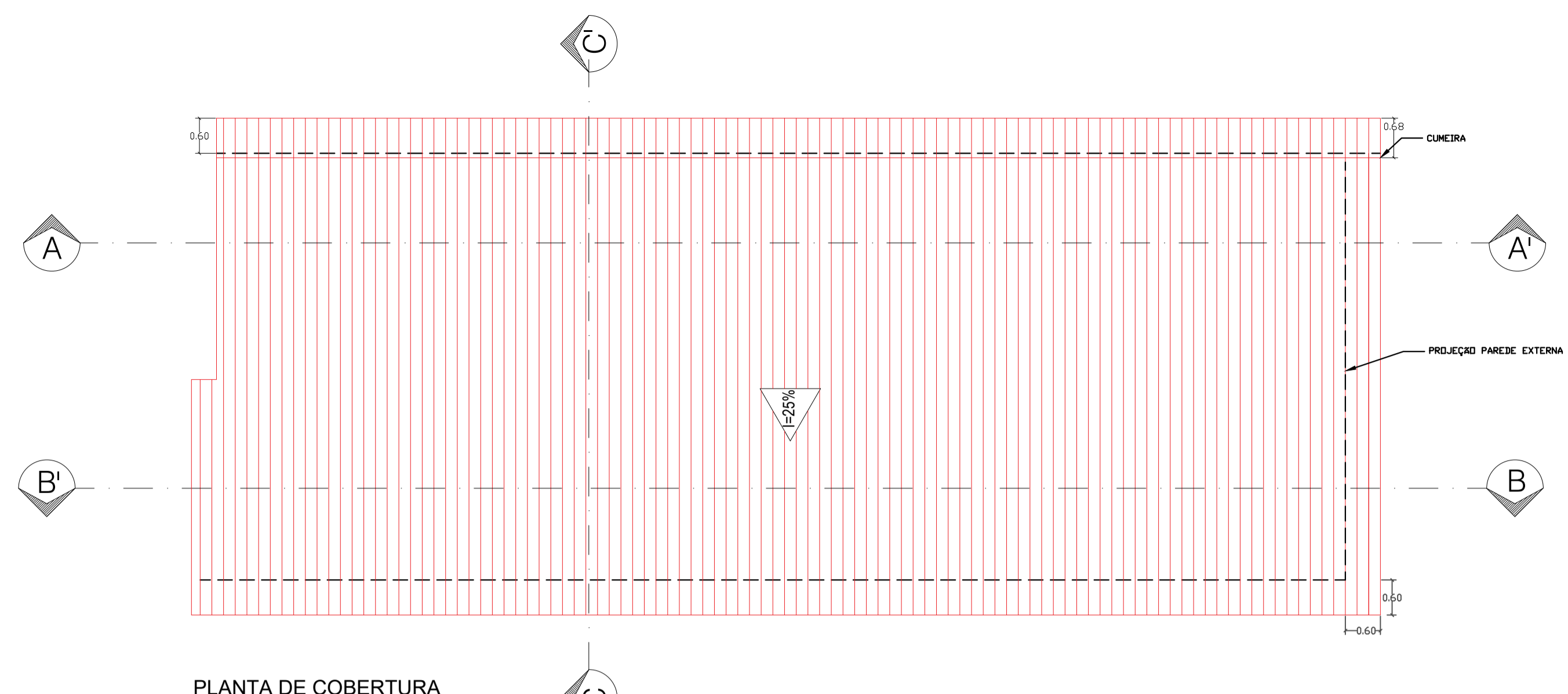
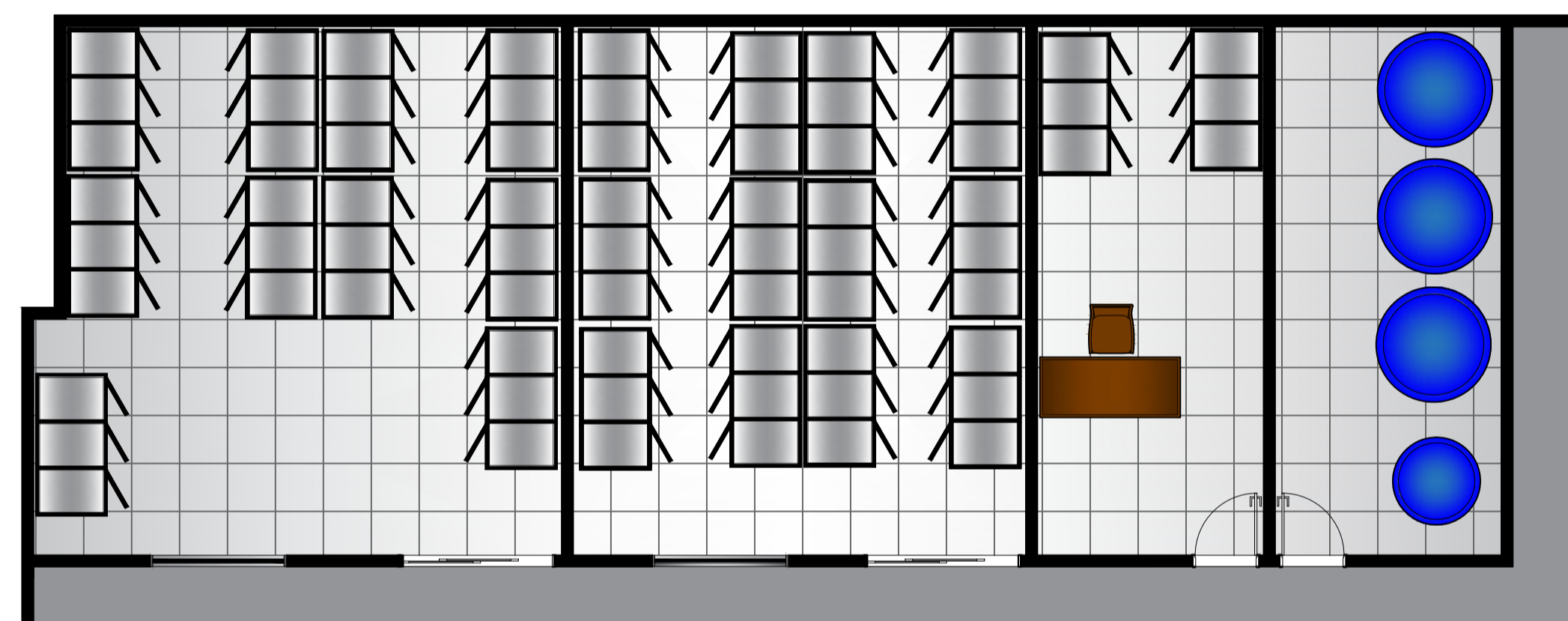


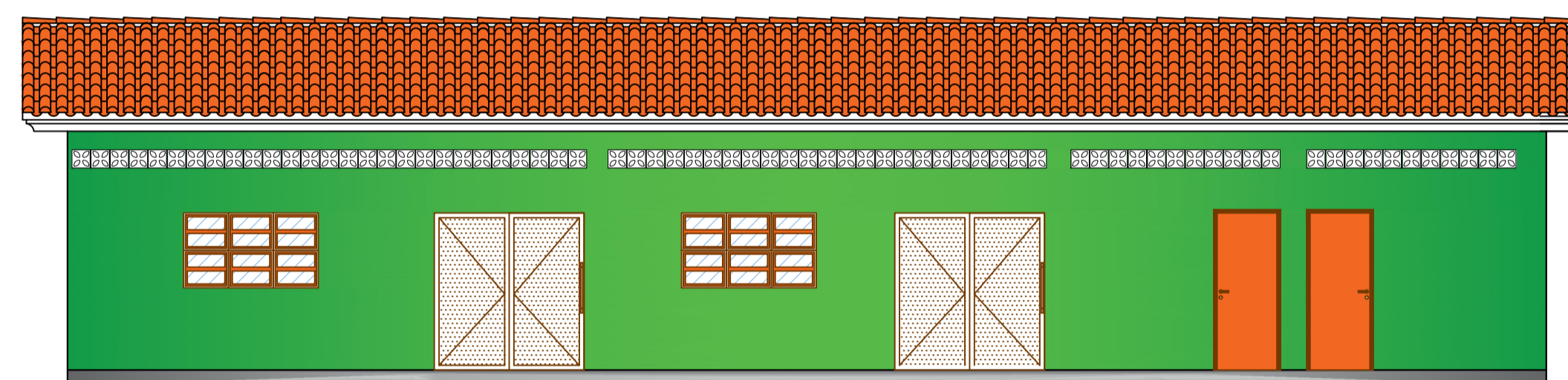
PLANTA BAIXA



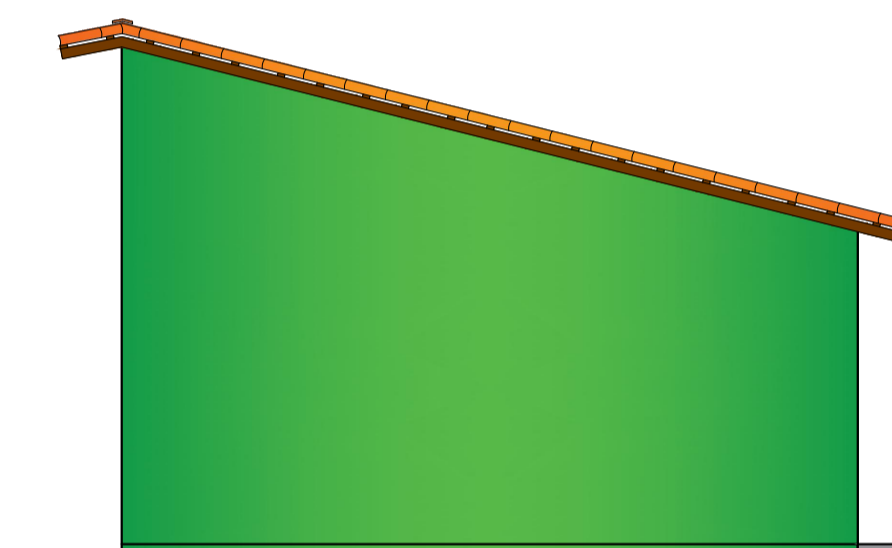
PLANTA DE COBERTURA



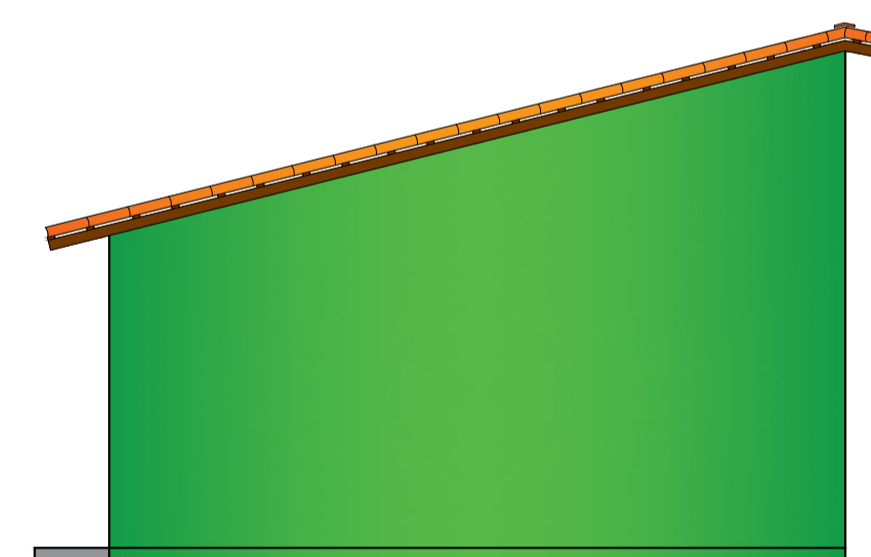
PLANTA LAYOUT



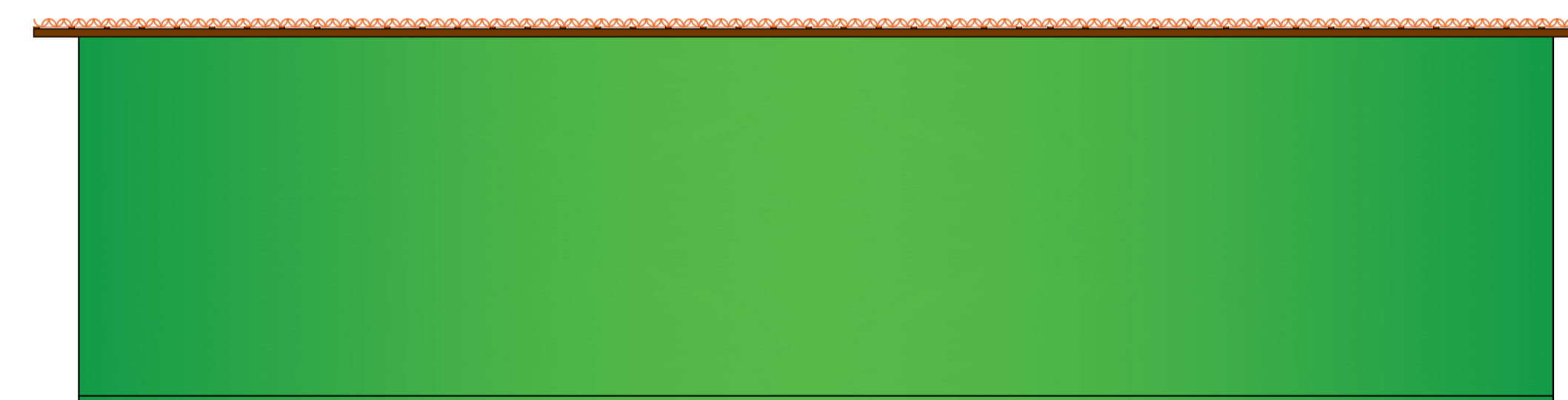
FACHADA FRONTAL



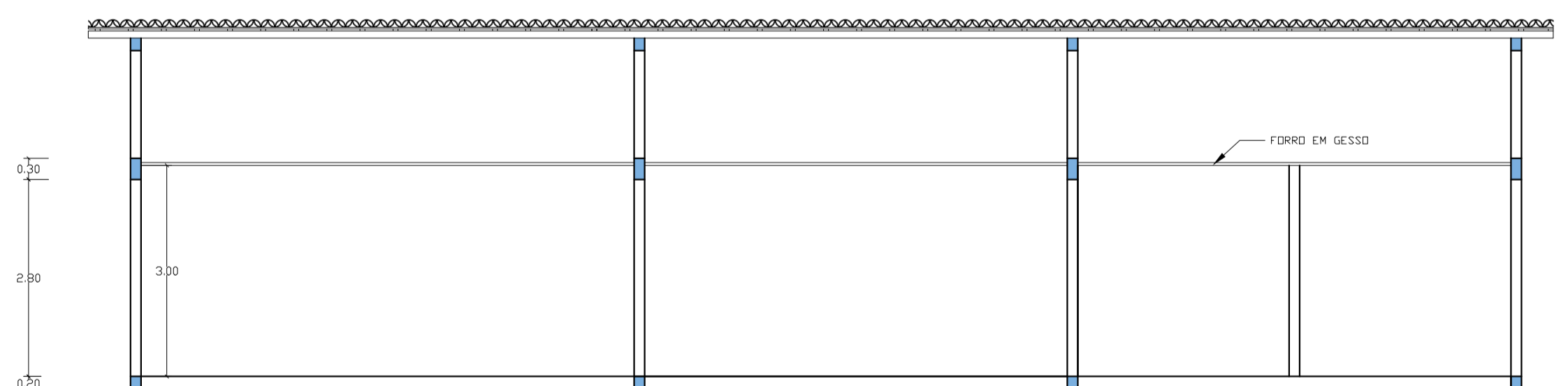
FACHADA LATERAL ESQUERDA



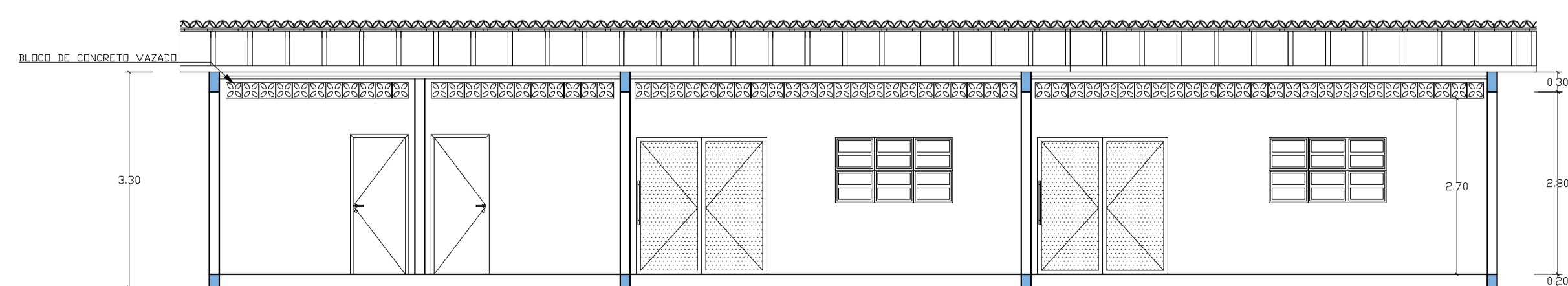
FACHADA LATERAL DIREITA



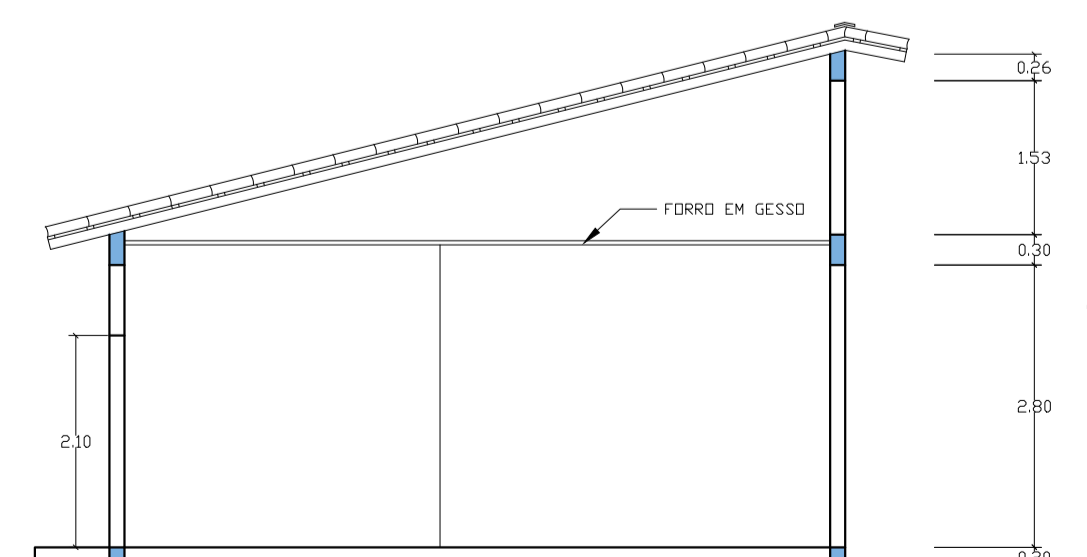
FACHADA POSTERIOR



CORTE A-A'



CORTE B-B'



CORTE C-C'

Obra: Almojarifado da prefeitura		
Local: Campo Largo do Piauí		
Proprietário: Prefeitura Municipal de Campo Largo do Piauí		
Projeto: Construção do almojarifado da prefeitura de Campo Largo do Piauí		
Arquiteta(o) colaboradora(o):		
Desenhista:	Data:	Rubrica:
Prancha: 01/01	Desenho: Arquitetonico	
Planta modificada/atualizada em:		